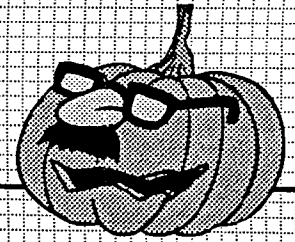


Coast Lines



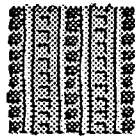
Volume 10 Newsletter for Coastal Quilters of Santa Barbara

October 2000

Show Time!

Harvest of Colors 2000 Coastal Quilters Guild, Inc. is having it's 2nd annual Membership Quilt Show and Boutique!

October Program: Guild Challenge Display 2000



Our annual Guild Challenge topic, "Wish You Were Here" will be held at the October 12th Guild Meeting. This is always an exciting event, when our members show their talents for variety, skillful hand and machine sewing, well spiced with imagination and challenges of new ideas. Over the years our Guild Challenges have been awesome displays of the unending creativity and novel techniques. Here is the challenge to set your personal vision and skills to this year: a quilted postcard displaying a vacation theme "Wish You Were Here!"

Who: Kristine Otte, chairs this year's challenge. She asks that your postcard challenge quilts be submitted with the Entry form, enclosed in this newsletter. See pages 11 & 12.

Come one, come all....bring your family and friends, quilters and wana-be's, quilt enthusiasts, buyers and gift seekers to a weekend of quilt of history in the making .. a virtual, visual harvest of quilts!

Where: Quilt drop off: Blue Island Quilts, Goleta **When:** Before Thursday, Oct. 12th or at the door at our CQG meeting. If you are bringing your entry to the meeting, please come early to. **Forms:** Challenge Entry Guild Show Permission along with quilt. **Size requirements:** small, no more than 24" on a side. Think of it as a quilted postcard, happily sent to a friend somewhere on the other side of the globe. No sleeve is required unless you want to add one. The Challenge Quilts will also be a part of our 2nd Annual Guild Quilt Show, Harvest of Colors, October 14 & 15, at Earl Warren Show Grounds. Please remember to fill out the permission form, for inclusion in the show, which is found on the reverse side of the entry form. Kristin will transport the challenge quilts to the show, hang them and return them at **Quilt Pickup** after the show.



Inside this issue:

President's Message	2
Calendar of Events	3
Our Guild this Month	
Harvest of Colors 2000	4-5
Tote Bags and T-Shirts	6
November Workshop	
Quilting on TV	7
Elected Officials 2001	
November Crazy Quilts	
Library Corner	8
Book Sale	9
Miniature Quilts	
New Deadline Thanks	10
Opportunity Quilt	
Board of Officers 2000	
Guild Challenge Entry	11 -
Form and Information	12
September Door Prizes	13
October Birthdays	
Special Announcement	14
Wish You Were Here!	
Block of the Month	15
Membership Information	16

Watch for the
Quilt Show's
News Press
Feature Article!

No Community
Quilt Meeting In
October.



President's Message

Hello Quilters

The quilt show is upon us. Next meeting will be two days before the show opens. Things are shaping up quite nicely, thanks to the hard work of all of the committees, and especially Leslie Hogan, Quilt Show chair. You will be contacted soon by the Acquisitions committee as to where and when to drop off your quilt, doll, and wearable entries. I am very excited to see the show, and hope that everyone has signed up for volunteer hours. This show is a "Members Showcase" and if you have a quilt in the show, you should be signed up for at least one Volunteer shift. If you do not have a quilt in the show, please feel it your duty as a member of the guild to support the quilt show. We have always had very positive feedback from the public about our quilt shows in the past. We have a reputation for being well organized and efficient. That reputation can only be upheld by each member contributing their time to make the show great. Diane Eardley is taking reservations for your spot at the show. Call her if you have not already signed up.

How are those Challenge Quilts coming along?

The Guild Challenge is away to express yourself uniquely. I treasure both of the quilts I entered in the challenge in previous years. Even if you have not started your challenge quilt, start now. Many great things have been accomplished in a short amount of time. We have had all year for our ideas to ferment. Now is the time for it all to come together. (Does it sound to you like I'm giving myself a pep talk?)

November's meeting should be a great one. Kelly Gallagher-Abbott is currently president of the Southern California Council of Quilt



Guilds. I have heard her speak and seen some of her work. It should be entertaining and informative. And from what I hear there is still room in her crazy quilt workshop. Contact Joanne Conklin if you wish to participate.

Speaking of Crazy quilts, I must have been momentarily insane when I wrote that September was Crazy Quilt Month, because September was Book Sale Month, So, if you still have a crazy quilt that you would like to show, bring it to the November meeting. Thanks to Carol Hamilton for showing us that very historic crazy quilt last month.

Desiree Cook is doing a great job of getting the Holiday Boutique together, and you will be hearing more about it after the Quilt Show.

To everyone who has worked so hard to keep the guild together, to Newsletter people, to those who bring the refreshments each meeting, to Quilt Show committees, to Block of the Month group, to all the Officers, to everyone who has made a Community Quilt, I wish a very sincere, thank you.

Ranell



The final Quilt Show meeting
is on October 4 at 7:00
PM at Samarkand in the Craft Room.

IT'S A SECRET!

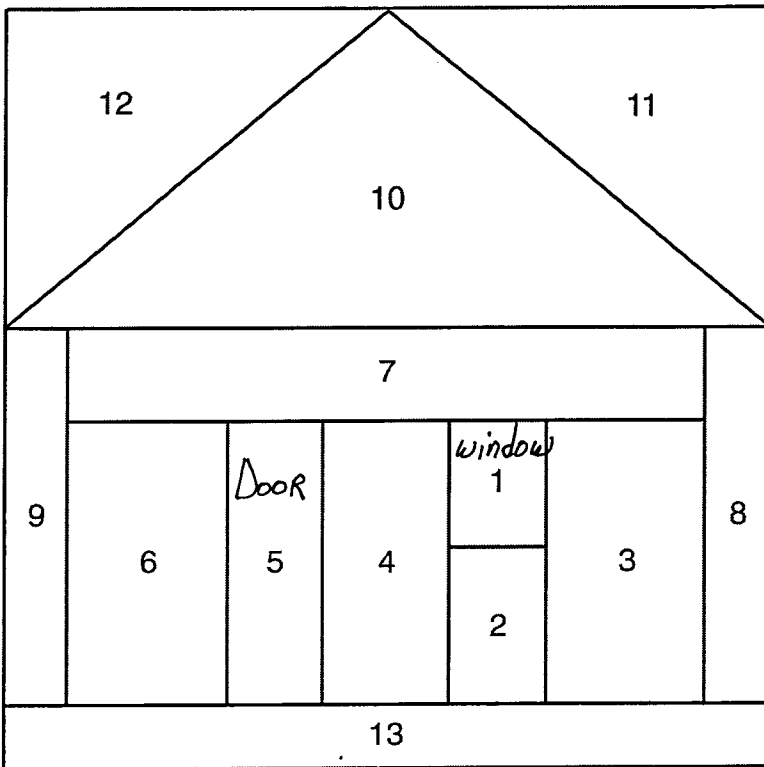
We would like to give a special gift to our great Guild Pres. Ranell Hansen, for all her hard work and leadership during the past two years. We think Ranell would love to have a memory of each of you, so please make the block below in any colors and fabrics that you love. When you're finished, please sign your block anywhere you choose using a good fabric pen.

This is a paper-pieced house, and the order for piecing is shown on the block. Start with placing fabric #1 on the unmarked side of the paper, then add #2 by sewing on the line on the right side. Add #3 etc. the same way. It is helpful to set your stitch length slightly smaller than normal so that it is easier to tear the paper off when you're done. Be sure to trim the finished block by adding 1/4 inch on all four sides, so that the finished block measures 4-1/2 inches.

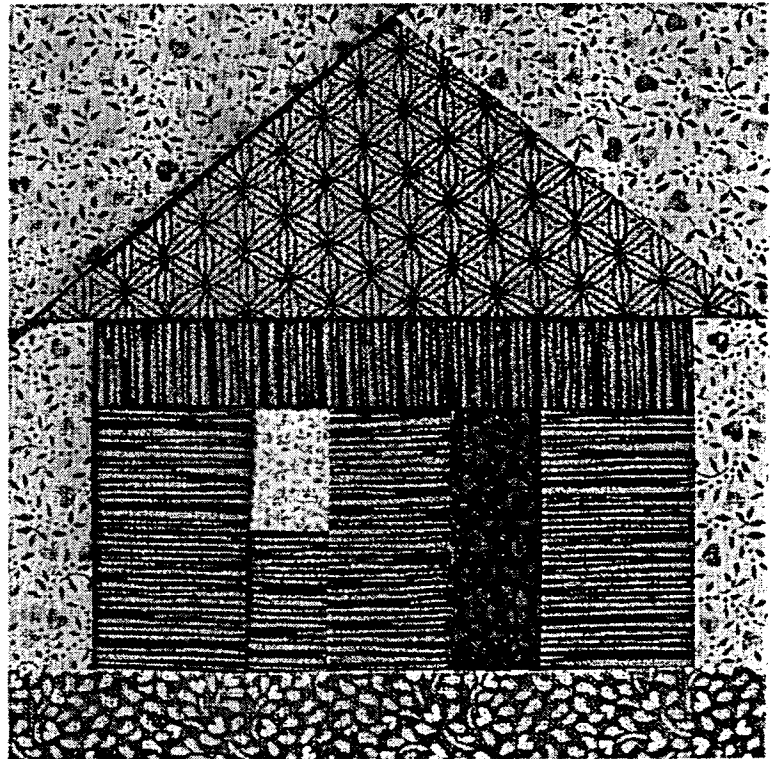
If you need help with paper-piecing, please call any of the following people who will gladly walk you through it: Judy Stanton 569-1152; Evelyn Gorrindo 687-2170; Betty Kelley 687-1443; Joann Conklin 967-0095; Gladys Brown 964-2471; Linda Hanna 962-7715; Judy Miller 962-2333.

When your block is complete, please send it to Susan West, 2114 Mt. Calvary Road, Santa Barbara 93105; or hand it to Susan or Judy Stanton at any Guild meeting prior to November 2000.

Remember – keep this a secret! We want to surprise Ranell with a pieced house block from every Guild member!



Paper Piecing Pattern



Your finished block will look like the photo above.



Calendar of Events FALL & WINTER 2000

Oct. 5-8 Tulare Historical Museum, THE VEST OF THE VALLEY - regional show of quilts & wearable Art. 10am to 4pm daily, 444 West Tulare St., Tulare. Inf. (559) 686-2074

Oct. 7 Simi Valley Quilt Show. Inf. (805) 527-9249

Oct. 6-7 North Cities Quilt Guild 2000 show, Cal State Fullerton, CA Fri., Oct. 6-10am to 5pm, Sat, Oct. 7-10am to 4pm. Inf. (714) 280-8310

Oct. 14-15 Harvest of Colors, 2nd Annual Quilt Show, Coastal Quilters, Earl Warren Show Grounds, 10am -5pm, free parking, adults: \$5.00, youth under 12 - \$3, under age 5 - free. No strollers please.

Oct. 21 SCCQG General Mtg., hosted by Valley Quilters, Northridge, Topic: Contracts & Programs.

Oct. 20-22 Fallbrook Quilt Guild Show

Oct. 21 Flying Geese Quilt Guild Quilt Auction, Irvine Presbyterian Church, 5 Meadowlark, Irvine, Tickets \$5, Inf. (714) 775-5731, Viewing 6pm; Auction 7:15pm

Oct. 20-24 Quilting Retreat, Holiday Inn Big Bear Chateau. Inf. (714) 974-7357 or justquilts@aol.com

Nov. 10-12 Afro-American Quilters of Los Angeles, Quilt Show 2000, Carson Community Center, Carson, CA

Nov. 10-11 High Country Quilters' 'Harvest of Quilts' 2000, Fri. 12-8pm, Sat 10-5pm, \$5, seniors 62+ \$4, Essex House Hotel/Convention Center, 44916 10th St. West, Lancaster, CA. Info. (661) 264-4441 or e-mail: sanjeans@earthlink.net

Dec. 9 Pine Needles Quilt Guild Holiday Home Tour & Boutique, 12-4pm, boutique opens, \$7.00 advance tickets. SASE Pine Needles Quilt Guild P.O. Box 2800 Wrightwood, CA 92397



Our Guild this Month

Oct. 4 Quilt Show Mtg., 7 p.m., Samarkand Craft room.

Oct. 9-11 Drop off challenge Quilts at Blue Island Quilt Shop or bring entries to meeting, arrive early

Oct. 12 Guild Meeting, 7:00 p.m. St. Andrews Church, Program: Annual Member Challenge: *Wish you were here!*

Oct. 13 Quilt show set-up and hanging of quilts

Oct. 14-15 Annual Guild Quilt Show "Harvest of Colors" Earl Warren Show Grounds, 10 a.m. - 5 p.m.

Oct. 15 after 5 - 7p.m. pick-up quilts, show take-down

Oct. 18 Guild Board Mtg., 7:00 p.m. Samarkand Craft Rm.

Oct. 20 (Friday) Coast Lines newsletter deadline for November issue.

Coming attractions...

Nov. 9 Guild elections; bring crazy quilts for Show and Tell Program: Kathy Gallagher-Abbott, "Crazy Quilting"

Nov. 11 Saturday - Crazy Quilt workshop.

Dec. 14 Year-End events: Installation of new Board and officers, & surprise program, no workshop.



Harvest of Colors 2000



Are you excited yet? I certainly am! All of the committees are right on schedule, and it promises to be a really exciting show. At this point, the success of the show depends on YOU, the members of the Coastal Quilters Guild. So I'll keep it short and sweet. Here's what we all must do to ensure the success of Harvest of Colors 2000:

1. Have your quilts and wearables and dolls ready to go, and turn them in on time. Please be sure to deliver them as instructed. For the quilts, besides the hanging sleeve and the label on the back, this means **IN A PILLOWCASE WITH YOUR NAME CLEARLY MARKED**. Two reasons: first, you don't ever want to store a quilt in plastic, particularly in a damp climate such as we've been experiencing and, second, plastic bags don't stack--they tend to slide around and make a big mess. If you don't want to buy a white pillowcase, you can always make one out of muslin or something similar.

2. **CALL MONTE FARRIS** (682-0166 and offer to deliver flyers to local businesses, hotels, etc. Tell everyone you know what a great show it's going to be.

3. **VOLUNTEER:** I cannot adequately stress the importance of guild members acting as white glove hostesses, go-fers, ticket sellers, etc. You are the points of contact between the guild and the public and you being there will make the difference between it being a GOOD show and a GREAT show.

WHITE GLOVE HOSTESSES need to think of themselves as a cross between a museum **DOCENT** and a museum.

Your responsibility is to educate--to answer people's questions and show them the backs of the quilts--but also to ensure the safety of the quilts from dirty fingers, from being stepped on, etc.

IT IS NEVER TOO LATE TO VOLUNTEER. If you show up in the middle of the afternoon on Sunday, believe me, I'll find a task for you.

4. You can still attend the **QUILT SHOW DINNER**. We can take reservations right up until October 12 (the guild meeting). The menus is delicious chicken, salad, etc., you'll be in good company --- and all for the amazingly low price of \$12.00, payable by check or cash.

5. **COMMUNITY QUILTS:** I'm pulling together a display to showcase the community quilt project. In addition to a few quilts, I want to include photographs from workshops and from presentations, letters from recipients, and so forth. If you have those items, please call me ASAP so that I can get copies.

**

My thanks go out this month to Norah McMeeking for stepping in to coordinate window displays in downtown businesses.

*Watch for a News Press
feature article!*

If you have questions or concerns, be sure to call me...968-7845. See you at the Guild Meeting and at the Show!

Leslie Hogan
Harvest of Colors 2000 Chair



Quilt Show Volunteers:

We greatly appreciate all of you who have signed up to work one or more shifts at the quilt show. Remember, this is your show, and especially if you have a quilt in the show, we would like for you to help run the show. The sit-down jobs are indicated in the descriptions below. We still need a few people in each category, so if you can help, please call Diane Eardley at 963-8321. Your quilts and your help will make this a spectacular show!

Job Descriptions:

White Glove People: The Guild members wearing white gloves (supplied by the Guild) are the hostesses for the show. They will answer questions (e.g., Where are the vendors?) and help as needed. They will be stationed between the aisles of quilts to make sure the quilts are not touched and to show interested viewers the backs of quilts as requested. A friendly smile is definitely appreciated for this job.

Ticket Takers: These people will sit at a table at the show entrance and sell tickets. This is a sit-down job.

Opportunity Quilts: These workers will sit at a table in front of the opportunity quilt and sell raffle tickets and the Guild-logo tote bags.

Go-fers: We need 2 go-fers for each shift to assist the Show Chair and Vendor Committee.

Security: These people will guard the side doors to make sure that no quilts "walk" out.

Help Take Down Quilts: This job is from 5-7 pm on Sunday. Helpers will take down the quilts from the pipe-and-drape and help return the quilts to the owners.

You will receive a postcard

in the mail a few days before the show reminding you of your shift and instructing you where to go when you arrive at the show. There will be instructions on the door of the closet just inside the entrance to the right of the front doors. A small amount of personal items can be left in the unlocked closet during your shift, so plan to carry valuables or money in your pockets. Bring the postcard with you on the day you work at the show since this is your ticket into the show. Every member who works a shift will get free admission to the show on the day they work. If you don't work at the show or if you come to the show on the day you do not work, you will be charged the \$5 admission fee.

Any questions?

Call Diane at 963-8321.

Show Time!

Entries due: On or before Monday, October 9 to Acquisition Committee

Show Set-up: Friday, Oct. 13, 1-5 p.m.

Take Down: Sunday, Oct. 15, 5-7:30 p.m.

Display Information: to coordinate displays in local businesses, contact Monte Ferris, (805) 682-1066

General Information: Leslie Hogan, show chair, (805) 968-7845

Members Sign up: for Yellow Apron Security Brigade or White Glove Hostess (2 1/2 hrs.), complimentary pass to the show the day you work.


Show Times: 10 a.m - 5 p.m

Location: Earl Warren Show Grounds, exit Hwy. 101 at Las Positas, Santa Barbara

Admission: \$5 / \$3 for children under 12 yrs., free to children under 5 yrs.

(no baby strollers)

On site: ATM machine,
Food, Home show.

Dinner \$12. See page 4. 

Tote Bags and T-Shirts

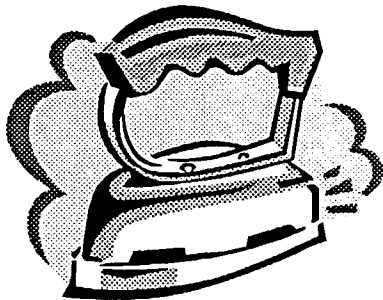


We now have beautiful royal blue tote bags with our Guild logo embossed on the side. The bags have a top zipper and an inside zipper pocket. We will be selling them at the Guild meetings as well as the Quilt Show. The donation is \$15.00. Besides buying one for yourself, they will make great Christmas gifts.

In addition we are ordering T-shirts with our Guild logo. They will be available for purchase at our October Guild meeting so that we have them in time to wear to our Quilt Show. If you have any questions or want to place orders, call Marilyn Martin, 967-6821.



A Pressing Tip



Pressing cloths should be made from upsized cloth. Washed muslin works well. Keep a few near your ironing board. Some fabrics will shine when pressed, so press the back side first. Blocks that have been appliquéd should be pressed from the back onto a soft towel using a press cloth.

In November:

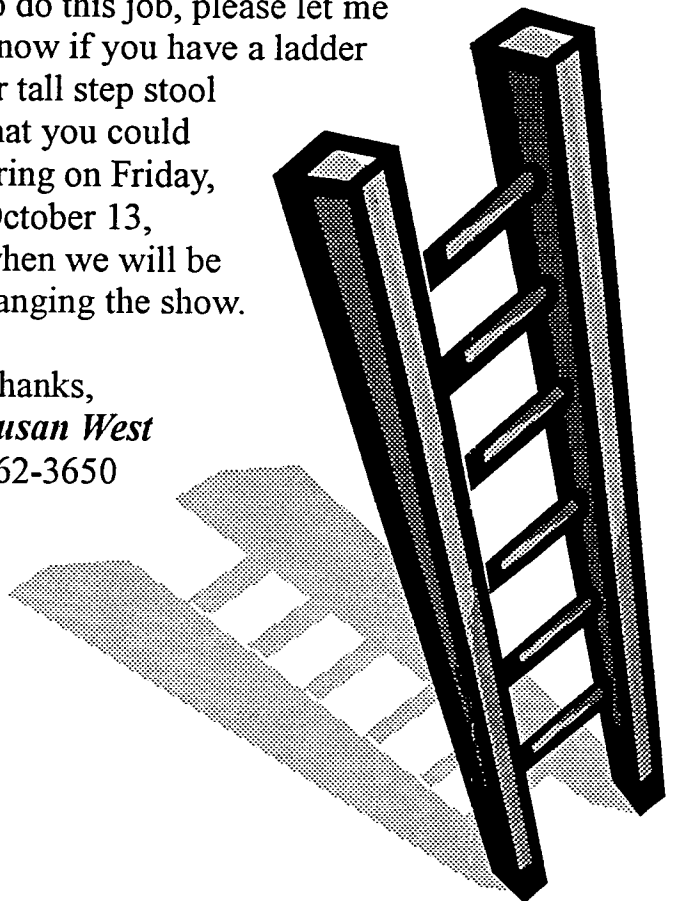
SATURDAY WORKSHOP

Kelly Gallagher-Abbott will be our guild speaker and workshop teacher in November. On Saturday, November 11th, Kelly will lead a one day Crazy Quilting Workshop. She will briefly discuss the history of crazy quilting and demonstrate numerous techniques from piecing to finishing. An optional materials kit for this workshop may be purchased from Kelly. The supply list and kit price will be available at the October Guild meeting.

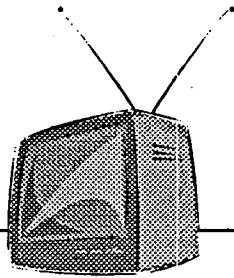
Attention All Quilt Hangers-----

The 'Hanging Crew' will need several small ladders to hang the quilt show. For those of you who volunteered to do this job, please let me know if you have a ladder or tall step stool that you could bring on Friday, October 13, when we will be hanging the show.

Thanks,
Susan West
962-3650



Quilting on TV



Beginning Monday, October 2nd, the morning TV show, Simply Quilts, will be moved to 5:30 a.m., but the 11:30 a.m. show will remain at the same time. October 4th begins the new season of quilt programs in the 11:30 a.m. slot. Viewers can catch repeat shows from last season at 5:30 a.m.

- 10/4 #601 Choosing a Quilt Design
- 10/6 #602 Nigerian Appliqué
- 10/9 #603 (Title not listed)
- 10/11 #604 Scrappy Flag; Mission Houses Museum
- 10/13 #605 Quilting 101
- 10/16 #606 Origami Quilts and More
- 10/18 #607 Quilt Museum; Delectable Mountains Quilt
- 10/20 #608 Patchwork ABC's
- 10/23 #609 Beginning Quilt Class; Bindings
- 10/25 #610 Kaleidoscope Quilting
- 10/27 #611 Sets and Sashings
- 10/30 #612 Fabric Shopping, Arabic Lattice

Current program listings: www.hgtv.com.
To view dates beyond the shown calendar, change the date in the address.

Happy Quilting,
Marty Frolli



Impulse Volunteers Welcome!

When members attend the Quilt Show, and get the urge to volunteer, we gratefully accept your assistance. Locate Diane Eardley or Leslie Hogan or the committee leader for a task during the show.

Slate of Elected Officers for year 2001

President---Diane Eardley
Programs---Norah McMeeking
Workshops---Kristin Otte
Programs Future---Robin Ruge
Recording secretary---Linda Hanna
Corresponding secretary---Evelyn Gorrindo
Treasure---Michelle Peerson
Parliamentarian---Ranell Hansen

If members have in mind nominations, Please obtain the nominees' consent and submit names at the October 12th Guild meeting. According to the Bylaws, we need to publish the slate one month prior to the election, which will be held at the November 9th Guild meeting.

Nola Ferguson



November Crazy Quilt Month ... any degree of craziness!

It was decided at the last Board Meeting that November will be Crazy Quilt Month. Everyone in the guild is invited to bring a crazy quilt to the November meeting. It can be an antique quilt belonging to someone else, or one you just made this year. It can be traditional or contemporary. It can be any size, and any shape, in any condition, and any degree of craziness. It'll be fun to see how many crazy quilts we can bring.



Library Corner - New Books

The visit of Elly Sienkiewicz to the September Guild meeting brought more than thought provoking lessons learned at her lecture. She also gave our library an autographed **ROMANCING RIBBONS INTO FLOWERS**. Once again reading from the preface to the end, her feminine vision, her personal stories, the history of our country and quilts give as much pleasure as reading a novel. Careful, detailed diagrams, beautiful colored photographs make this an encyclopedia of ribbon flower making for quilt appliqué, clothing ornament and Victorian decoration. It has an asked for comprehensive resource directory of specialized supplies, classes and finished products.

Jacobean embroidery, an early cousin of Elli's Baltimore album appliqué, sprang from Elizabethan times in England, came to our country with colonists, and was renamed "crewel" embroidery. Then 250 years later came Patricia Campbell's application of these antique botanical designs to quilts. **THE BEST OF JACOBEOAN APPLIQUE** by Patricia and Mimi Ayers presents these fanciful, simplified flowers, oversized leaves, and entwining vines with full-size block patterns. It joins our other book, **JACOBEOAN RHAPSODY** by Mary Clark. There is something unmistakable about the clean, uncomplicated solid Jacobean style that is appealing.

And then we turn to Ireland with yet another book of historic inspiration, **CELTIC STYLE FLORAL APPLIQUE** by Scarlet Rose. For thirty years since

Philomena Durcan first published **CELTIC QUILT DESIGNS** and invented the bias bar method of making bias strips, the interlacing Celtic designs have enjoyed popularity. The addition of color inside the loops of the Celtic scrolling and the addition of flower shapes is what makes this one different.

Our loyal supporter, That Patchwork Place, has sent us two of their 1999 publications. **JUST LIKE MOMMY** by Cheryl Reinhard Jukich combines sweatshirts and simple purchased patterns to make matching outfits for kids and moms. Suggested fabrics include plush fleeces and fuzzy flannels.

Accessories like a doll purse, cozy winter mittens, and a flouncy hat come, too. **FAT QUARTER QUILTS** by M'liss Rae Hawley helps you decide what to do with those addicting 18" X 22" pieces of fabric. With just six coordinating fat quarts and a background fabric, you can make one of the eight quilt plans in this book. They are all pieced and about 57" X 55". Oh, and there is a fat-quarter bag, also made with six fat quarters.

Some lucky member picked up our extra copy of **QUILT DESIGN SOURCEBOOK** from the book sale. We discarded it to make room for Helen Squire's **CREATE WITH HELEN SQUIRES**, one of her five books in a series on quilting designs. The designs in this book are somewhat less traditional and are suited to hand or machine quilting. The focus of the book is to help plan the whole quilt design. A wonderful enlarging or reducing photocopying chart is on page 31. It is all figured out for you.

Happy reading! *Joyce Ball*

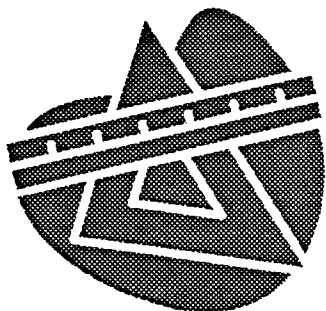


Miniature Quilts

This year's Guild Challenge, "Wish you were here!" can be made postcard size, up to 24 inches in size. A true miniature quilt is 1/12 the size of a regular quilt. In a miniature quilt, all the pieces are reduced, including the seams. A pieced pattern block may be reduced on a photocopy machine to 1/12th its size. This technique works well if the pieced block is adaptable to paper piecing techniques...number the block pieces before you reduce and use the papers to make your block.

If you are not using paper piecing techniques and are having trouble making 1/8 inch seams, the problem may be the width of your presser foot. The foot needs to cover the feed dogs which pull the fabric. Hunt around in the box of presser feet for a foot that has a mark, guideline or prong to your right which measures 1/8 inch. If you still have problems getting straight seams, cut the pieces to allow for 1/4 inch seams or larger, then trim the block's seams after sewing. Start sewing from the middle of the seam towards the end to avoid swerving at the critical junctions.

Miniature quilts, once the techniques are mastered, can be used as samples of larger quilts, handiwork challenges, framed art, parts of clothing or bags, and gifts. Our guild library has books on the topic. The local bookshops also carry magazines for the avid miniature quilter.

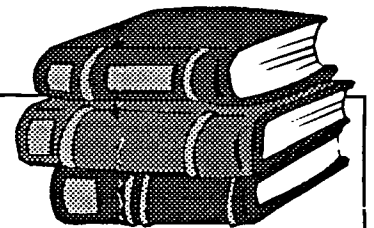


Two Tips:

To ease strain in the shoulder when cutting with a rotary cutter, elevate table or surface with door stoppers, binder or books. Try slanting your machine forward with door stopper to ease neck pain.



To make efficient use of time, work on two quilts at a time, one in the piecing stage and one in the quilting stage.



BOOK SALE

Happily toting home armloads of books and magazines, our members enriched the Guild Library by \$368.00. The few items left at the end of the evening were donated to the Goleta Public Library and Goodwill. Several donated, out-of-print books, such as RED WAGON ORIGINALS, found their way into the Guild collection.

Because of the need to keep the library portable, its size must remain at ten crates. At least this forces us to keep it fresh and up-to-date with members benefiting from discards.

More donations from members filled out the sale than discarded library books, but that's typical of our sharing, isn't it? Many thanks to all who took the time to look at home for unused materials. Suggestions for new titles for the library are always welcome and keep the library "recycling" going.

New **CoastLine** Deadline:

Newsletter Crew Sends Thanks!

A hardy thanks to everyone who submitted items for the October newsletter by the new deadline which was Friday, September 22nd. It was a great help to the newsletter staff to have the 'facts' early. Please send items for the November newsletter before Friday, October 20th.

Please preface your subject line:

NOV News: __ (subject) __

Thank you for your help.

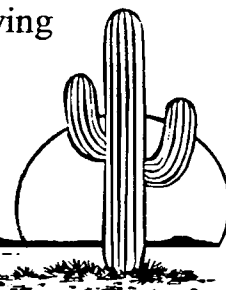
Lynn and Marlene

Opportunity Quilt Tickets:

Each member has received 10 tickets to sell for our beautiful opportunity quilt. We encourage you to sell your tickets and turn the money and stubs in at the Guild meetings or send to Marilyn Martin. Proceeds are going to sponsor scholarships at Santa Barbara City College. If anyone needs more tickets please call Marilyn Martin at 967-6821.

Opportunity Quilt Ticket Coordinator

Marilyn Martin will be taking over as ticket coordinator for our annual Opportunity Quilt. Carol Meyer, a long-time member of our guild, has moved to Las Vegas where she will be working at the Bernina Sewing Center located there. Carol sends her best wishes for the success of the Opportunity Quilt project. When you are in Las Vegas, be sure to look her up. We will miss her expert and creative sewing skills and hope that she will continue to be a long-distance member.



Board and Officers 2000

President: Ranell Hansen
Vice Pres. Workshops: Betty Kelley, Joann Conklin
Vice Pres. Programs: Susan West
Vice Pres. Future Programs: Norah McMeeking
Recording Secretary: Michelle Peerson
Corresponding Secretary: Jane Harrah
Treasurer: Judy Stanton
Parliamentarian: Isabel Downs
Block of the Month: Evening Star Satellite Group
Challenge Quilts: Kristin Otte
Community Quilts: Suzy Carter
Coast Lines Newsletter Editor: Lynn Laughrin
Newsletter Layout: Marlene Pearson
Newsletter Distribution: Gladys Brown
Door Prizes: Elizabeth Harper, Marie Voyles
Historian: Lorraine Miner
Librarian: Joyce Ball, Gail Tinsley
Membership: Diane Eardley
Nominations: Nola Ferguson
Satellite Groups: Beth Jones
Southern California Council of Quilt Guilds:
Lora Martin, Oleta Bennett
Telephone: Harlene Bailey
2000 Opportunity Quilt: Karen Pickford
2000 Opportunity Quilt Tickets: Carol Meyer
Hospitality: Ingrid Engmyr, Martha Adams,
Ruth Walters
Special Events: Judy Miller, Judy Stanton,
Anne Braddock

Yes, you may hang *my* quilt in the *Harvest of Colors Showcase, Oct. 14 & 15, 2000*
See release on back

(check box)

Challenge 2000! Entry Form

"Wish You Were Here!"

Member's Name _____

Telephone Number _____

Title of Quilt _____

Size of Quilt (w" x h") _____

Techniques used (circle)

Hand:	Pieced	Quilted	Appliqued
Machine:	Pieced	Quilted	Appliqued

Embellishments _____

Special Techniques _____

Other _____

Statement: (In 50 words or less, please) What was your inspiration, challenge or interest in completing this quilt? How does it reflect the challenge theme?

Questions call Kristin Otte 683-4390

(One entry per form. You can enter more than one quilt in the Challenge.)

Coastal Quilters Guild, Inc.

I grant Coastal Quilters Guild, Inc. permission to show my 2000 Challenge quilt at their "Harvest of Colors, a Members Showcase", October 14 & 15, 2000, at Warren Hall, Earl Warren Showgrounds, Santa Barbara. This document releases Coastal Quilters Guild, Inc. and Kristin Otte from liability for the quilt. The quilt will be stored and transported to and from the meeting and the Showgrounds for the displays by Kristin Otte. The undersigned acknowledges that she has been informed that the quilt owner assumes all risk for her own quilt(s) loss and damage. The quilter is encouraged to take a photograph of her quilt for the purpose of self-insurance.

Name _____

Name of Quilt _____

Date _____



September Door Prizes

Blue Island Quilts donated a fabric pack, won by Judy Mudfoot.

Betty's Fabrics donated an Omnigrd and 5 fat quarters: won by Joan Buss.

Quilter's Cupboard of Atascadero donated fat quarters and a quilt book, won by Diane Moore.

An assortment of quilting goodies, won by Desiree Cook.

P&B Textiles: Fat quarters won by Toni Lesowski.

Heartwarmers Mercantile donated fat quarters and a \$20 gift certificate, won by Vickie Mahan.

Piecemaker's of Costa Mesa donated the 2001 crazy quilt calendar "Times & Seasons" which was won by Zetta Hanna.

Gibb Quilting Frame was won by Margaret Dear.

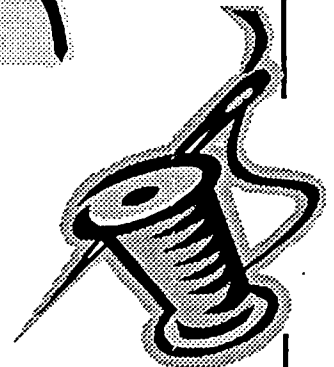


Spools for Schools:

Spools for Schools drop box will be at the door at each guild meeting until the end of the year. Please, donate your empty thread spools and cones for elementary schools and children's art projects.

October Birthdays

Lynette Lishman	2
Irene Lewis	4
Charity Gourley	6
Patricia Shewczyk	7
Judy Rys	9
Roberta Goldenbee	15
Ellen Richardson	15
Ruth Kuykendall	14
Arla Wardell	23
Joann Conklin	25
Diane Eardley	25
Evelyn Gorrindo	25
Sandy Hess	25
Nola Ferguson	26
Maggie	
Godwin Steward	26
Suzy Carter	27
Karen Heath	31
Joyce Berger	31



Block of the Month Special

Announcement:



This year all the designs for Blocks of the Months are stars, designed by members of the satellite group, Evening Stars. They ask, "If you made the 'Judy's Star' block printed in the June newsletter and displayed at the July guild meeting, please call Lois Hodges at 968-7845."

There is still time to make blocks for the final prize drawing at the end of the year. Sew, sew and sew blocks for the October, November and December meetings. If you are one of those clever quilters, you have made or collected each design for a quilt of magical stars!

Wish you were here!



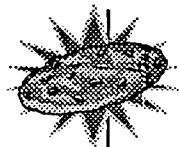
I know you're all busy stitching & tacking down last minute bindings on your entries for the "Harvest of Colors" & the Challenge 2000. Remember, the field is open to express yourself in any quilted medium, using any techniques, methods & materials you find suitable. This year no size is too SMALL, so you still have a chance to enter the Challenge - even a few days or hours will do it.

Bring your Challenge pieces to Blue Island Quilts the week of October 9th. (Shop hours are 10am - 6pm) If you can't make it ahead of time, I'll be at the door of the October CQG meeting to accept entries. (There is an entry form in this newsletter. See pages 11 & 12.)

New Zealand has reported that they received our small quilts sent to them for their exhibition. I got their quilts on 9/18- all postcard size, all unique, all fantastic representations of our Challenge! (Do you feel the pressure?) You will enjoy seeing them in their own special category in the Challenge.

Call Kristin Otte with any questions 683-4390.

Pumpkin Cookies



4 c flour
1-1/2 c butter
2 c quick cooking oats
2 c brown sugar
2 tsp baking soda
2 tsp cinnamon
1 egg
1 tsp salt
1 tsp vanilla
2 c pumpkin, puree (16oz)
1 c chocolate chips
1 c raisins
1 c chopped nuts
1/2 pkg M&M's

September Block of the Month
won by Doris Gilman



Preheat oven to 325 degrees F. Grease cookie sheets. Cream butter, sugar and egg, vanilla and pumpkin, beat it all until light and fluffy. Mix in dry ingredients, beat in cup by cup, mix all well. Drop on cookie sheets by teaspoonfuls, leave space they will spread out. Bake 20-25 minutes, or until firm and lightly golden brown. Remove from cookie sheets, cool on racks. Decorate with M&M right away or drizzle with LEMON GLAZE: 1 3/4 cup of Powdered Sugar, 1 Tablespoon grated lemon peel, 1 Tablespoon lemon juice. Combine all three and glaze the cookies with it, or decorate with jelly beans for children.



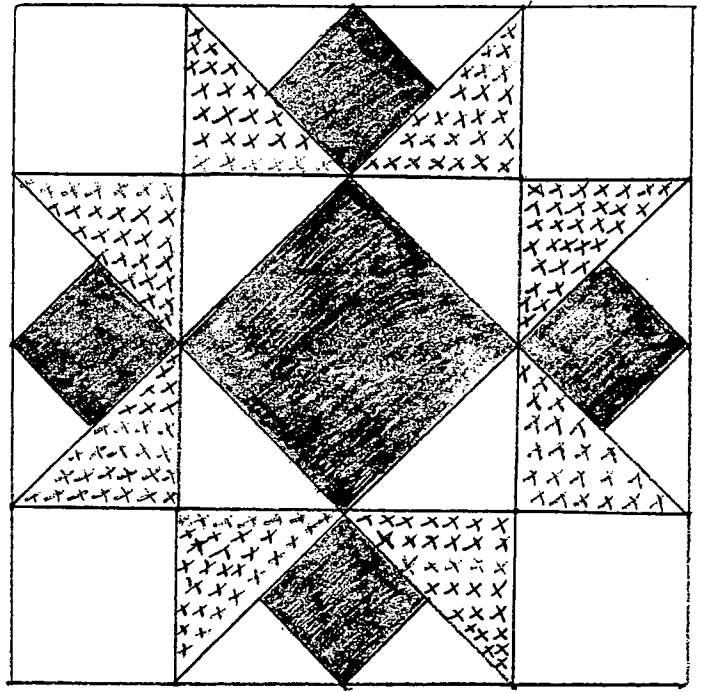
Block of the Month October 2000

Ultimate 3-D Star

'Three Dimensional Patchwork Sampler' By Jackie Robinson

Colors: Star Color A – Dark Jewel Tones 
Star Color B – Medium Jewel Tones 
Background – White

Pieces Needed: 4 Rectangles $3\frac{1}{2}'' \times 6\frac{1}{2}''$ – Background
4 Squares $6\frac{1}{2}'' \times 6\frac{1}{2}''$ – Color B
8 Squares $3\frac{1}{2}'' \times 3\frac{1}{2}''$ – Color A
1 Squares $6\frac{1}{2}'' \times 6\frac{1}{2}''$ – Color B
8 Squares $3\frac{1}{2}'' \times 3\frac{1}{2}''$ – Background



Please do try this star. While the directions may seem a little confusing as you read them, when you follow them with the material in your hands, the star really goes together fairly quickly. Check out the pieces on the block of the month board at guild. You will see how simple this is. The first three items listed are for the "Crocus with Snowballs" that make the star points. The $6\frac{1}{2}''$ Color B square and 4 of the $3\frac{1}{2}''$ Background squares are for the "On Point Center Square". The remaining 4 $3\frac{1}{2}''$ Background squares are the four corners.

On Point Center Square: Fold the large square of Color B in half horizontally, right side out. Sandwich it, with the fold side down, between two squares of Background, their right side facing the Color. Line up the raw edges. The fold of the Color rectangle will be $\frac{1}{4}''$ short of the lower edge of the Background squares. Stitch with a $\frac{1}{4}''$ seam along the side edge, catching the raw edges and the fold. Do the same thing with the other two Background squares at the other end of the Color B rectangle. Open the 'pocket' formed in the Color B fabric. Spread it so the two seams just stitched come together. Stitch across this edge catching the raw edges of the Color B piece in the seam. Open your material and there is an "On Point Center Square" with a 3-D Center.

Crocus with Snowballs: Fold the large Square of Color B in half diagonally, right side out. Fold it in half again. Place the long edge even with the long edge of the Background rectangle. Secure in place with a single pin, from the bottom up toward the point. It now looks like a flying goose. Fold a smaller square of Color A in half, diagonally, right side out. Place on top of the corner of the rectangle goose. Likewise, fold a second square of Color A and place it on the opposite corner. The two open sides should be along the side and bottom of the rectangle goose. Stitch a $\frac{1}{8}''$ seam allowance around the two short sides and the bottom of the rectangle. Make four of these for our star.

Putting it all Together: Sew two of the $3\frac{1}{2}''$ Background squares to the ends of one of the crocus rectangles. Sew the remaining two $3\frac{1}{2}''$ Background squares to the ends of a second crocus rectangle. Sew the remaining two crocuses to opposite sides of the On Point Center Square. Then sew the crocus with the corner squares to the top and bottom of the center strip you just made. Watch the points on your crocus' so that they all point out. All of the diagonal sides will be open pockets.

QUESTIONS ????? COMMENTS ?????? Call Lois at 563-1411.

Guild Web Page Address:
<http://www.coastalquilters.org>



REMINDING our Members...

- Oct. 4 Quilt Show Mtg., 7 p.m., Samarkand Craft room.
- Oct. 9-11 Drop off challenge Quilts at Blue Island Quilt Shop or bring entries to meeting, arrive early
- Oct. 12 Guild Meeting, 7:00 p.m. St. Andrews Church, Program: Annual Member Challenge: *Wish you were here!*
- Oct. 13 Quilt show set-up and hanging of quilts
- Oct. 14-15 Annual Guild Quilt Show "Harvest of Colors" Earl Warren Show Grounds, 10 a.m. - 5 p.m.
- Oct. 15 after 5:00 p.m. pick-up quilts, show take-down
- Oct. 18 Guild Board Mtg., 7:00 p.m. Samarkand Craft Rm.
- Oct. 20 (Friday) Coast Lines newsletter deadline for November issue.

**New Members and
Membership renewals:**

Mail your membership form, check or Money Order for \$25 payable to: Coastal Quilters Guild, Inc.
P.O. Box 6341, Santa Barbara, CA 93106
Attn: Membership
Guests: \$5.00

***Coast Line* Newsletter**

This is a monthly publication.
The new deadline date is the
THIRD FRIDAY OF THE MONTH.
Send articles to: editor Lynn Laughrin
1224 E. Mason, #B
Santa Barbara, CA 93103
radish@gte.net

Membership

Guild meetings are held on the
second Thursday of each month
at 7:00 P.M. at St-Andrew's Presbyterian
Church, 4575 Auhay, Goleta, Ca.
Please car pool, parking is limited.
Coastal Quilter's Guild of Santa Barbara
and Goleta is a non profit, educational
and charitable organization.
It is the purpose of the Guild
to educate its members about the
history and preservation of the art form
of quilt making and its related topics. Also to
learn new techniques, improve skills
and to inform the community
at large about our quilt making heritage.

Coastal Quilters Guild

*P.O. Box 6341
Santa Barbara, California
93160*

NON PROFIT ORG.
U.S. POSTAGE
PAID
Santa Barbara, CA
Permit No. 688

