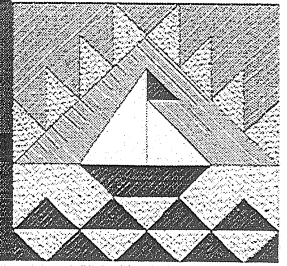


Coast Lines



Volume 6

Newsletter for Coastal Quilters of Santa Barbara

June 2004

This month's meeting is our ANNUAL POTLUCK DINNER!

The Coastal Quilters' Guild annual potluck dinner and meeting will begin at 5:30 p.m. on **Thursday, June 10**. The dinner portion of our evening will be held outside on the church patio. Please bring a folding chair or two in addition to a favorite finger food to share. (New members don't have to bring food!) Appetizers, snacks and desserts are popular choices. This is a Guild of good cooks, so be prepared for a feast.

The June meeting is specifically planned to honor our new members, which means all those who have joined CQG since last June. This social evening offers a wonderful opportunity for us to get to know each other better. This year our Used Book Sale will be held at the same time. Please come to the dinner and bring money to buy books. All proceeds will benefit the Guild library collection. Also, remember that one lucky member will win the Singer Featherweight at our door prize drawing. So don't miss this meeting!



Book Sale!

Quilt Show Boutique

There's only one other thing that could possibly compete with the words "Fabric Sale" for the members of the CQG... and that's **BOOK SALE!** Yes, that's right, the Guild's **BOOK SALE** will be held at the next general meeting, June 10th. Our wonderful library coordinator, Laura Nanna, reports that she has over 550 books (in her living room!) ready to be boxed up and brought to the meeting for the sale. You heard me, 550 books! All reasonably (or even cheaply) priced and ready to go home with you for your sewing and reading pleasure.

So tuck a few dollars in your purse (along with some for the Featherweight drawing!) and come to the biggest **BOOK SALE** ever!

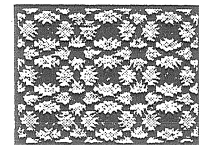
We have a few more months to finish our lovely handcrafted items for the Harvest of Colors Quilt show Boutique. We want to continue our high standards for quality workmanship for this 2004 Boutique. (Remember, we don't sell quilt supplies at the Boutique.)

Everyone who sells handcrafted articles at the Boutique also works in the booth during the show. Be thinking of the hours you would like to work—ideally, you will work a two-hour shift each day. The time goes very fast during these shifts as we also work as greeters to all the people coming in to the show. It's a fun job!

If you have questions about the Boutique, please call me, Evelyn Gorrindo, at 687-2170.

Inside this issue:

President's message	2
Call for Entries	3
Block of the Month	4
Quilt Show Application	Insert
More about Featherweights	5
Advertising	5
Quilt Show	6
Birthdays	7
SCCQG Calendar	7



Featherweight Doorprize!

A friend of Suzy Carter donated a Singer Featherweight sewing machine to the Guild, and it will be the special door prize at the June New-Members Picnic meeting. The money raised will go toward a "real" lectern for the Guild. Any of you who have had the pleasure of speaking at the lectern know how unstable our current music stand lectern is.

Continued on page 3

President's Message

Today, quite by chance, I read the words of the Chinese philosopher Lin Yutang:

Besides the noble art of getting things done, there is a nobler art of leaving things undone. The wisdom of life consists in the elimination of non-essentials.

Hmmm... Interesting... Who is this guy? Has he seen my sewing room with all of my unfinished projects? He would be quite impressed at how well I have mastered the 'art of leaving things undone'!

It has been many years since I studied philosophy, but I agree in part with Lin Yutang; it is wise to eliminate

the non-essential. It is especially wise if one is to have a carefree summer. I'm looking forward to a relatively carefree summer beginning with our Guild potluck and ending with our Challenge evening in September. Thinking about the summer, I am once again reminded of how much fun it is to be a part of this very special group of quilters. CQG qualifies as essential in my book. I'll have to eliminate something else. Maybe cooking....

Happy summer. I hope to see you all on June 10th.

Susan West

NEWS AND NOTES

Lots of news and notes this month! First of all, we all wish **Betty Libbert** a speedy recovery and a return to good health and happy quilting.

There *will* be a workshop with **Andrea Pareda** on July 9th. Details in the next newsletter.

I hope you all saw the **iMadonnari** drawings at the Mission over Memorial Day. **Marlene Pearson** is to be congratulated for masterminding the Guild's participation in this event. I'm writing this before the fact, so I can't say what the chalk drawing looked like, but I have seen the design and it's wonderful!

How many **Opportunity Quilt** raffle tickets have *you* sold?

Isabel Bartolome gave me a note that said her OB doctor told her (back in the 1940s) that she should no longer sew on her treadle machine as it might bring on premature labor!

I just received **Earlene Fowler's** latest e-mail newsletter and her latest book about Benni Harper's adventures was published on May 4th. Titled *Broken Dishes*, it deals with a dude ranch, a bunch of quilters, and a mysterious buried body ... I'll have to put that one on my wish list! Her next novel, *Delectable Mountains*, is due to the publisher on June 30th, so we should see that one early next year. Finally, Earlene is publishing a book in October called *Benni Harper's Quilt Album*. Sounds like fun! Check out Earlene's website at <http://www.earlenefowler.com>.

Have you been thinking about what **board position** you'd like to take on next year? Or a committee position? Being on the board and working with other Guild members is a great way to meet new people, to get involved with wonderful projects, and have a lot of fun! E-mail me if you want to know about the job of newsletter editor, and call or e-mail other board members to ask about their positions. They'll be happy to give you all the information.

If you missed the PCPA production of *Quilters* in 1989, you have a second chance to see it this year! This heartwarming musical will play from September 3-18 at the Marian Theatre in Santa Maria, and September 24-October 10 at the Festival Theatre in Solvang. If you haven't tried one of the PCPA productions at their wonderful open-air theatre in Solvang, you are really missing a fun treat! Check their website for *Quilters* ticket prices and other productions over the summer at <http://www.pcpa.org>.

Congratulations to our **scholarship winner** from SBCC! **Mihong Ma** will be at our June picnic meeting and will bring some of her paintings to show us.

Don't forget-if you want to have a photograph taken of your Quilt Show entry, you can bring it to the June meeting. **Quilt Show entry photos** will be taken *before* the meeting starts at 5:30pm.

Paulette Ley has the directions and materials list for making your own quilt frame out of PVC pipe. Call her or e-mail her for the details.

THE VALLEY QUILT SHOW

By MaryAnn Huggins

I attended the ninth annual regional show of quilts and wearable art on April 16-18, 2004, in the Heritage Complex at the International Agri-Center in Tulare, California. If you have not put this *annual* quilt show on your list of must-attend quilt shows, you are missing a real treat! I have been attending this show for several years and I

must tell you it has become a quilt show I never miss. The quilters of the Central Valley have never disappointed me and this year was no exception. Nancy Rink of Bakersfield was this year's featured artist and the show had twenty of her quilts. The juried and invitational show had approximately 250 quilt entries by artists from Bakersfield to Sacramento. Also on display were the 2003 Hoffman Fabric Challenge, the 2003 Sulky Challenge, "My World in Black and White," Cloth

Dolls, and Janet Fletcher's collection of Civil War Era Quilts. There were also 23 vendors and three Central Valley guilds with opportunity quilts.

Mark your calendars now because next year's show will be held April 15-17. Plan on either a full day trip or an overnight trip. No matter which route you take inland to the Central Valley (46, 166, or 33), it is a beautiful drive this time of year. "Where is Tulare?" you ask. It is just south of Visalia on route 99. The Agri-Center is visible from the 99, and is easy to get to with plenty of parking and nice facilities. For all the ladies who have a husband or significant other who enjoys machinery, this quilt show runs in conjunction with the Antique Farm Equipment Show! You will have plenty of time to look at the quilts while he checks out acres of equipment! Great planning, don't you think?

Call for Entries - Artist Opportunity

All artists working in fiber arts, painting, sculpture, drawing, printmaking, photography, ceramics, glass, metal and mixed media are called to enter a quilt art national juried exhibition hosted by Makeready's Gallery 214 ArtSpace in Fall 2004 at its large exhibit space in Montclair, New Jersey. Jurying is by slides.

"Quilts For Art Sake 3", third annual contemporary quilt art exhibit, Oct 8 - Nov 28, 2004 at Makeready's Gallery 214 ArtSpace for Fall 2004.

Deadline for entries: August 15, 2004

Jurors: Patricia Malarcher, fiber artist & editor of *Surface Design Journal* and Maureen R. O'Brien, artist & director, Makeready Press Gallery

Objective: To exhibit contemporary quilt art, displaying a broad scope of work by artists working in studio art quilts both traditional and non-traditional, who may use very diverse media to express their visual world. Works must be a quilt/layered composition and may be in any medium.

Awards:

Three artists will be invited to participate in a three-person invitational exhibit in 2005 valued at \$1500.

Source Book Presentation: Each accepted artist's slides shall be included in the in-house gallery source book for one year.

Juried by slides. Entry fee = five slides for \$35.

Insurance: Makeready Press Inc. insures all accepted works in the gallery during the exhibit period.

For Prospectus send #10 SASE :

Makeready Press Gallery, 214 Glenridge Ave., Montclair, NJ 07042.

For information call 973-744-1940, fax 973-744-2202,

We can fax artists a prospectus and it may be duplicated.



Continued from page 1

The drawing will be at the end of the June meeting, following the picnic and a brief business meeting. The machine dates from 1951 and has a special Centennial Edition plaque on it, increasing its value. It is in excellent condition, sews wonderfully, and has all of the attachments. Check it out during the potluck dinner, and it could be yours for only \$1! If you have any questions or cannot attend the June meeting but would still like to purchase tickets, call or e-mail Diane Eardley (963-8321).

Block Of The Month – July

Whirligig

We're all hoping for some cool summer breezes!
You'll be ready to catch one if you have...
a Whirligig Block!

Fabrics:

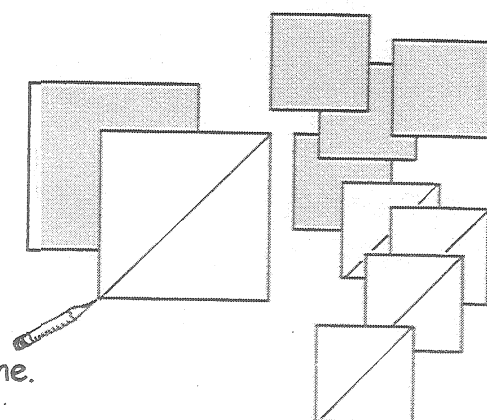
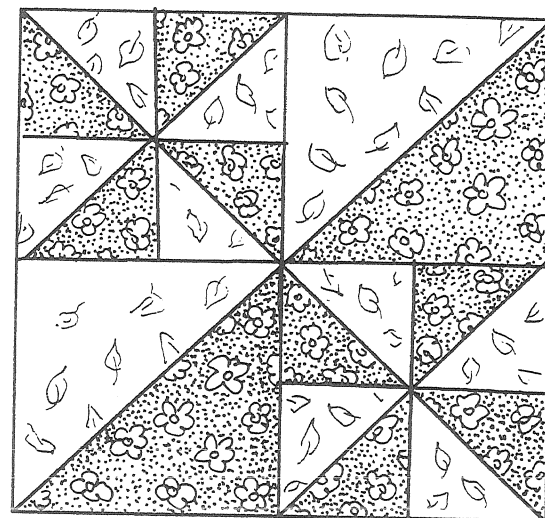
- (1) A tan or white print.
- (2) Your choice of any medium to dark color print.

Cutting:

From EACH fabric, cut:

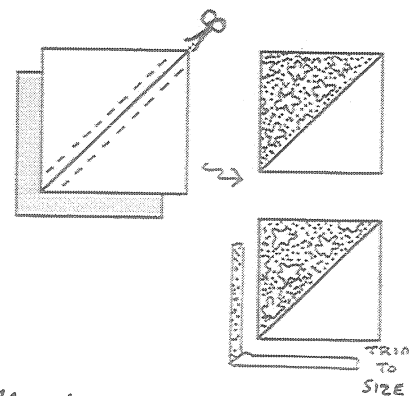
- 1 – 7-1/4" square
- 4 – 4-1/4" squares

On the back of each tan (or white) square, draw a diagonal line.

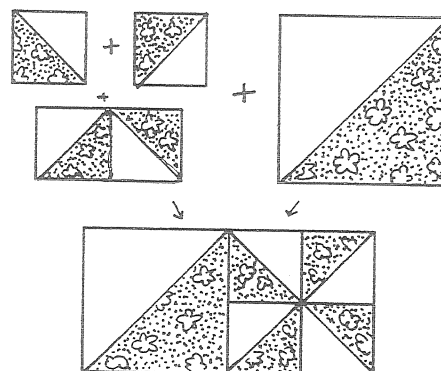


Assembly:

- 1.) Layer each colored square with a tan (or white) square, right sides together. Stitch 1/4" away from BOTH sides of the drawn lines.
- 2.) Cut along the drawn lines, then press open (press toward dark triangles) to make 8 small and two large triangle-squares.
- 3.) TRIM small squares to 3-1/2".
TRIM large squares to 6-1/2".



Assembly diagram:



Your finished block should measure 12-1/2".

Whirl!

CQG Members Showcase
October 9 & 10, 2004

QUILT Entry Form

Member/Exhibitor's Name _____ Daytime Phone _____

Address _____ Evening Phone _____

City, State, Zip _____

Name of Quilt _____

Size: width _____ in. x length _____ in. Predominant color(s) _____

Quiltmaker _____ Quilted by _____

A photograph of the quilt must accompany this application.

Please staple labeled photo to the back of this form. Photos will not be returned.

Techniques: (check predominant technique) Hand Pieced _____ Machine Pieced _____

Hand Appliquéd _____ Machine Appliquéd _____ Embellished _____

Special Techniques: _____

Do you want your quilt judged? Yes No

A \$5 check for judging fees payable to CQG must accompany this form.

(For questions about judging and categories, please call Ruth Walters 687-2709.)

Size of quilt: Large width plus length must be no less than 120"

Small (width plus length must be less than 120")

Indicate in which category you want to be judged (see back of form for categories)

Traditional _____ Innovative _____ Group _____ Pictorial _____

Quilted by Hand _____ Machine quilted by quiltmaker _____ Commercially quilted _____

Please indicate the priority of this entry for inclusion in the show. 1st choice _____ 2nd choice _____

(You may submit more than one quilt. Your first choice is automatically entered in the Showcase.)

Is this quilt entirely your original design? Yes _____ No _____ (If no, list design source below.)

Quiltmaker's statement for signage purposes. (Write a few sentences about your entry. You may want to mention theme, meaning, etc. Please credit source of inspiration such as workshop/pattern/book. This statement may be edited for length, grammar, clarity and style.) _____

Is your quilt for sale? No _____ Yes _____ Price? \$ _____ (A 15% commission will be due the Guild.)

Use a separate form for each entry and submit by mail to: Quilt Show Acquisitions Committee
c/o Kristin Otte (683-4390); 5724 Armitos Ave., Goleta, CA 93117

DEADLINE FOR SUBMISSION OF ENTRY FORMS: Monday, August 2, 2004

Committee Use Only Date Rec'd _____ Submission No. _____

Quilt Exhibitor Information

This exhibit is a **members' showcase**, providing an opportunity for everyone to display their newest, best, or favorite quilt(s) at a large show. The committee urges each and every member of the Guild to submit one or more entries to this event.

Submit your written entry(ies) as soon as possible. **It's not too early to reserve your place on the wall.** Your quilt(s) must be completed by the application deadline. Every member of Coastal Quilters Guild is assured of the display of at least one quilt. Exhibit space permitting, additional quilts will be selected according to available space. Please indicate the priority of the submitted entry; every effort will be made to honor your priority.

For purposes of this show, a **quilt** is defined as a fabric construction consisting of a front, filler layer, and back held together with stitching and made by the member-exhibitor. Cheater panels and tied quilts will not be accepted. Quilts may not have been hung at a previous CQG exhibit.

Security Arrangements: Every effort will be made to protect all quilts. Accounting and surveillance will be strictly planned and maintained. Eating and smoking are prohibited in the exhibit hall. Responsible white-gloved hostesses will try to keep all quilts in view at all times and will discourage touching by viewers. However, CQG show insurance does not cover the quilts. Each owner is responsible for insuring her own quilt(s) for loss and damage.

Sleeve: A 4" sleeve must be attached to the back top. This provides a safe and secure means of hanging the quilt. Quilts without sleeves will not be exhibited.

Label: An identifying label should be sewn securely to the quilt on the back of the lower right side stating the quilter's name, address, telephone number, and name of quilt.

Photograph: A photograph of the quilt must accompany this application. Please label the photo and staple it to the back of this form. Photos will not be returned.

Judging: If you wish your entry to be judged, you must **cover** the label with a piece of cloth or paper pinned to the quilt. A **\$5 fee** for judged quilts must accompany this form.

Packaging: Each quilt must be delivered in its own pillowcase with the maker's name marked in indelible ink in large letters on the hem. This will help keep the quilt clean and facilitate transport.

Categories *Here is a brief outline of the judging categories.*

Traditional: a pattern or design with an established history in the quilting tradition.

Innovative: a design with fundamental deviation from traditional patterns and sets, reflecting growth through tradition.

Group: a quilt made by two or more people, excluding commercial quilting.

Pictorial: an art quilt that illustrates a recognizable image, such a people, wildlife, cityscapes, etc.

2004 CHALLENGE

We hope you are all engrossed in your “elemental” quilt projects and having fun playing in the “straight furrow” or “storm at sea” or “blazing stars” or “north wind” or ...? Because these quilts will be hung on small dowels at the Guild’s Quilt Show in October, please add a sleeve at the top of the quilt back. Look for the Challenge entry form in future newsletters and remember to think of a title for your creation. Questions? Contact Cynthia Manzer (687-0657) or Barbara Franklin (969-4082).

more about the Featherweight...

From the web site: <http://quilting.about.com/library/weekly/aa033097.htm>

Most new quilters become private detectives—searching for a small Singer sewing machine called a “Featherweight.” This classic machine (made from the mid-1930s until the early 60s) is understood to sew the most even stitch of any sewing machine. With its small weight (11 lbs) it is perfect for taking on trips and to workshops. It does no fancy stitches (only goes forward and backwards), but it’s a dream machine. Between 1948 and 1959, there were 1,055,326 Featherweight machines manufactured; this should mean many happy quilters continuing to find Featherweights for years to come!

An incredible amount of history and lore has grown up around the Featherweight, also known as Singer Model 221. It’s a “collectible” of the first order and is featured on many Web pages that cater to antique sewing machine collectors. There is even a Web page devoted to people who collect the oilcans that came with the Featherweight!

Check out this site, too: <http://www.ismacs.net/singer/ybarra.html>

Advertising

If you are a member of the Coastal Quilters Guild and you sell products or services relating to quilts, you can be listed in this section of our newsletter. Your listing is free, and special attention will be paid to members offering discounts, “stash” cards, classes, or sale events. Please send your information to Newsletter Editor, PO Box 6341, Santa Barbara CA 93160. For specific questions, please e-mail Susan Carty at susan@carty.com.

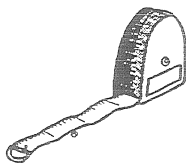
✓ = Stash Card	* = Discount to Guild Members	❖ = Sale Event
⌘ = Classes Offered	☆ = Quilt Run participant, June 4-6	

Baron’s Fabrics *
379 Carmen Road
Camarillo, CA 93010
www.baronsewfab.com
482-9848

Blue Island Quilts ✓ ⌘ ☆
5140 Hollister Avenue
(Magnolia Shopping Center)
Santa Barbara CA 93111
683-0112

Craft Essentials *
187 S. Turnpike
Santa Barbara CA 93111
681-3115

Grant House Sewing Machines * ⌘
❖ Sidewalk Sale during Quilt Run
5152-A Hollister Avenue
(Magnolia Shopping Center)
Santa Barbara CA 93111
967-3680



Linda Karppinen
Quilt Appraisals
www.qalinkarp1@aol.com
563-0817

Nancy King
❖ 2nd quilt half-price; call for details
Santa Barbara Custom Quilting
www.sbcustomquilting.com
687-2063

Quilt Ventura ✓ ⌘ ☆
4572 Telephone Road, #908
Ventura CA 93003
www.joey@quiltventura.com
658-9800

Note: Members of the Coastal Quilters Guild are entitled to run one free “classified ad” a year in the newsletter. If you have a special need or an item you wish to sell, contact the Newsletter editor for details. No other commercial advertising will be accepted.

THE QUILT SHOW NEEDS YOU TO VOLUNTEER!

The Guild's Harvest of Colors quilt show in October is an undertaking that requires many volunteers to make it a successful event. Remember, this is the major fundraising project for the Guild, and it makes possible the speakers, workshops, and community service activities that we, as Guild members, value.

If possible, every Guild member should volunteer to do something to make the show a success.

It is not too early to start thinking about what YOU might do. There are jobs in advance of the show, such as distributing posters and collecting quilts. In the days leading up to the show, judging assistants and people to help set up the show and hang the quilts will be needed. Saturday and Sunday of the show, there are both sitting jobs, such as taking tickets, and standing jobs such as white gloves. Sunday, people will be needed to take down the show.

More detailed descriptions of all the volunteer positions, as well as opportunities to sign up for those positions, will be forthcoming as "showtime" approaches and members have a better grasp on their fall schedules. In the meanwhile, please think about how you would like to contribute. Quilt show meetings are ongoing and all members may attend to find out what's going on; check this newsletter for the next meeting!

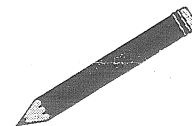
2004 Guild Officers and Appointed Committee Chairs

Elected Officers

President	Susan West	962 3650
V P- Current Programs	Penny Odom	966 0516
V P- Future Programs	Ann Edelman	658 3634
Recording Secretary	Paulette Ley	964 5780
Corresponding Secretary	Judy Stanton	695 8828
Treasurer	Sandy Hess	682 8569
Parliamentarian	Angela Moll	683 6622
Workshops	Nancy King	687 2079
	Celeste White	964 6362

Committee Chairs

Coastlines Editor	Susan Carty	964 2942
2004 Opportunity Quilt	Wanda Livernois	962 4247
	Lena Scharfeld	682 3639
Challenge Quilt	Cynthia Manzer	687 0657
	Barbara Franklin	969 4082
Community Projects	Kathy Laabs	965 3933
	Diane Moore	968 2104
Refreshments	Maribel Hawel	965 6827
	Lucy Harville	963 2556
2005 Opportunity Quilt	Robin Ruge, Angela Moll	
Block of the Month	Jan Beckert, MaryAnn Huggins	
Coastlines Distribution	Mary Deweese	
Coastlines Layout	Peter Glatz	
Door Prizes	Jean McCaffrey, Dorothy Fitch, Francine Smith	
Historian/Photographer	Betty Libbert, Doris Gilman	
Librarians	Laura Nanna, Heather Georgakis, Erma Sheaha	
Membership	Nancy Wood, Maureen Hyland	
Satellite Groups	Ruth Walters	
Scholarships	Nola Ferguson	
SCCQG Representative	Joyce Ball	
Special Events	Marilyn Martin, Joann Conklin	
Webmaster	Megan Miley	
Welcome Committee	Janet Jensen, Nancy Olsen, Dorothy Gibbons	



Treasurer's Report, April 2004

Starting Balance	\$7190.46
Income	
Door Prizes	\$162.00
New members & visitors	\$215.00
Opportunity Quilt	\$316.00
Total Income	\$693.00
Expenses	
St Andrews rent and set-up	\$150.00
San Marcos Storage	\$43.00
Workshop	\$104.10
April Speaker	\$125.00
Membership directories	\$461.10
Newsletter printing	\$191.54
Franchise Tax Board	\$10.00
US Postal Service	\$150.00
SCCQG	\$94.09
Total Expenses	\$1328.83
Ending Balance	\$6554.63

SUMMER CLASS AT ADULT ED

Marty Frolli will be offering a *Quilter's Workshop* this summer at the Wake Center on Turnpike Road. The class is an unstructured 3-hour time period for you to work on your own projects (big tables to baste quilts and Berninas to use in the classroom). Marty will be there to answer questions, give advice and help you make decisions! The workshop meets for 6 weeks, starting June 8th, in Room T2. There are two sessions offered: 9am to noon, and 12:30pm to 3:30pm. The cost is \$10.

May Door Prizes

Congratulations to our May winners!

Diana Hamilton	Paula Nainabo
Janet Berlin	Sandy Hess
Judy Stanton	

Many thanks to our wonderful vendors!

Art to Heart	Quilt Ventura
Baron's Fabrics	Quilter's Studio
Craft Essentials	Robert Kauffman
Creation Station	Fabric Co.
Fairfield	Timeless Treasures
Free Spirit Fabric Co.	Warm Company
Grant House	

June Birthdays

Sandy Wilmot	Jun 03
Jeanette Jillson	Jun 04
Judyl Mudfoot	Jun 06
Marjorie Hall	Jun 06
Beth Jones	Jun 07
Ingrid Engmyr	Jun 08
Vickie Mahan	Jun 08
Claire Estes	Jun 09
Nancy Wood	Jun 11

June Birthdays

Marian Abrecht	Jun 12
LeAnn Speshyock	Jun 12
Francine Smith	Jun 13
Teresa DeWitt	Jun 15
Barbara Aspen	Jun 16
Pamela Holst	Jun 16
Susan West	Jun 16
Celeste White	Jun 16
Gail Cooley	Jun 20

June Birthdays

Colby Kline	Jun 20
Kristin Otte	Jun 21
Adriana Concha	Jun 25
Mary Iorio	Jun 25
Marcia Moore	Jun 25
Cecilia Puppò	Jun 25
LouAnn Schlichter	Jun 26
Gwen Dandridge	Jun 29

SCCQG Calendar of Events • June - August 2004

The Calendar of Events is maintained by SCCQG and made available to members to aid in scheduling and advertising quilt shows and other guild-related activities. Calendar event notices will be accepted from any paid guild or individual member. Space priority is given first to guild activities. Notices are generally limited to four (4) lines.

June 5-6: Antelope Valley Quilt Association's 27th Annual **Quilt Show**: "New Horizons," Antelope Valley Fairgrounds (new facility and new location: W. Avenue H at the 14 Freeway), **Lancaster, CA**. **Special Exhibit**: "My World in Black and White" on loan from Fiberarts Connection of Southern California. Saturday 10-5, Sunday 10-4. General Admission \$5. For more information, visit <http://www.avqa.org> or call Janis (661) 714-9094 or Barbara (661) 724-1243.

June 6-7: Beach Cities **Quilt Show**: FantaSea of Quilts show, Saddleback College Gymnasium, 28000 Marguerite Parkway, **Mission Viejo**. Live auction Saturday at 1 p.m. For more information, contact webmast@beachcitiesquilters.org

July 11-15: **Camp Watch-a-Patcher** sponsored by the Orange County Quilt Guild at Concordia University, **Irvine**. For information, visit their website at www.orangecountyquiltersguild.com

July 17: **SCCQG Meeting**, hosted by Schoolhouse Quilters of **Rosemead**. Topic: Meet the Teachers

August 7-8: **Quilt Daze V (Quilt Show)**, Yorba Linda Community Center, **Yorba Linda, CA 92886**. Sponsored by Yorba Linda Historical Society and Yorba Linda Woman's Club. Admission \$5.00, 10-4 Saturday & Sunday. For more information please contact Julie Astle 714-777-2096, or e-mail ylquiltshade@aol.com.

August 20-22: **Fabulous Fiber Fest in Santa Monica** – classes, market, and fashion shows! For information send a SASE (\$0.60 stamp) to 3767 Overland Avenue, Suite 102, Los Angeles, CA 90034. or visit www.thefiberfest.com

Guild Web Page Address:
<http://www.coastalquilters.org>

THIS MONTH

June 10 Guild meeting 6:30 PM

Potluck Dinner 5:30 PM

*Wear name tags

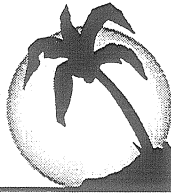
*Sign up for refreshments for July

*Return Library books

June 17 Board meeting

June 18 Newsletter deadline for
July newsletter.

NEW MEMBERS AND MEMBERSHIP RENEWALS:
Mail your membership form, check or money
order for \$25 payable to:
Coastal Quilters Guild, Inc.
Attention: Membership
P.O. Box 6341
Santa Barbara, CA 93106



Guest fee: \$5.00

Coast Lines Newsletter

This is a monthly publication. News-
letter articles will be accepted up
until the 18th of June for the July
issue.

Send articles to Editor:

Susan Kinnell Carty

4891 Frances Street

Santa Barbara, CA 93111

e-mail: susan@carty.com

Guild meetings are held on the second Thursday of
each month at 7:00 PM at St. Andrew's Presbyterian
Church, 4575 Auhay, Santa Barbara, CA.
Please carpool, parking is somewhat limited. Coastal
Quilters Guild of Santa Barbara and Goleta is a non-
profit, educational and charitable organization. The
purpose of the Guild is to educate its members about
the history and preservation of the art form of quilt
making and its related topics; to learn new techniques
and improve skills; and to inform the community at
large about our quilt making heritage.



NON PROFIT ORG.
U.S. POSTAGE
PAID
SANTA BARBARA, CA
PERMIT No. 688

Coastal Quilters Guild
P.O. Box 6341
Santa Barbara, CA
93160